

# CLASS 150

# Y-PATTERN STRAINER

Y-Pattern body, Screwed cap, 304 stainless steel screen  
 Threaded ends to BS21 (JIS B0203) or NPT,  
 or solder joint ends.

W.O.G. non-shock 2.07 MPa (300 psi), Saturated steam pressure 1.03 MPa (150 psi) up to size 2\*

\*Contact KITZ for larger sizes



**Fig. Y**

- Threaded end to BS21 (JIS B0203)

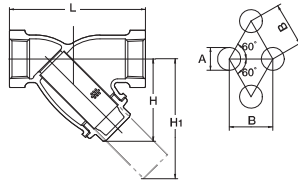
**Fig. AKY**

- Threaded end to ASME B1.20.1



**Fig. CY**

- Solder joint ends to JIS B2011 / ASME B16.18 (2½ & 3)



### Materials

Parts	Material	
Body	Bronze	
Body cap	Brass	
Screen	Type304 Stainless Steel	
	A	B
¾ to 2	1.4	2.4
2½ to 3	1.5	2.5

- ⚠ Solder joint end valves should not be used in service where the temperature of line fluid is higher than the softening point of solder.
- ⚠ Don't use for Flammable gas or Toxic gas.

### Dimensions

Nominal Size	inch	¾	½	¾	1	1¼	1½	2	2½	3	mm
L		10	15	20	25	32	40	50	65	80	
L1 Solder			80	105	125	145	170	210	250	280	
H		44	49	57	70	82	98	121	148	180	
H1		61	68	83	105	124	149	188	216	267	