

PG-2

PG-2 is a pressure gauge with structure that transmit the elastic deformation of the bourdon tube to the pointer. The case is made of stainless steel and has excellent corrosion resistance.

■ Specification

Applicable fluids	Steam, air, liquid*1	
Maximum temperature	60°C *2	
Shape	A type	
Size	φ 100	
Pressure range	0-2.5 bar/4.0 bar/6.0 bar/10 bar/16 bar/25 bar/40 bar (with psi scale)	
Material	Case	Stainless steel
	Bourdone tube	Stainless steel
	Spanner flat	Stainless steel
Connection	BSPT or NPT 1/2	



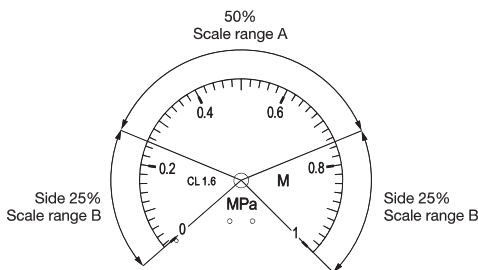
*1 If using oxygen, degrease treatment is required.
Please contact for oxygen application.

*2 If application exceeds maximum temperature, use the product with Siphon pipe.
· The product can not be adjusted or disassembled.
· Please keep the product away from water and use it in dry place.

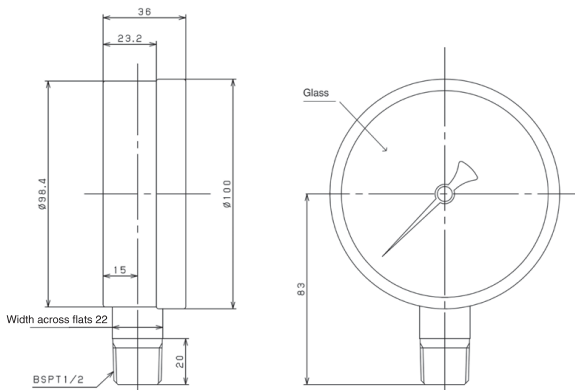
■ Accuracy of Pressure Gauge (acceptable tolerance) ■ Tolerance Scale Range

Scale range A	Scale range B
±1.6	±2.4

* Value of acceptable tolerance is expressed in percentage of pressure span(all scale range)



■ Dimension



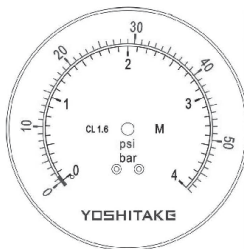
■ Pressure Range

7 different range is available. Make sure that working pressure be in the range of 25-75% of maximum scale upon selection. Please specify the pressure range upon order.

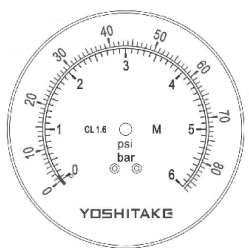
Pressure range
0~2.5 bar



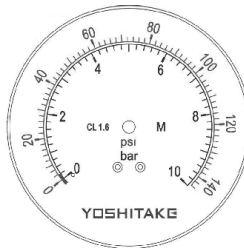
Pressure range
0~4 bar



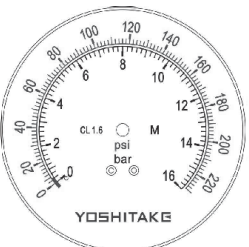
Pressure range
0~6 bar



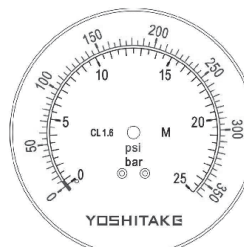
Pressure range
0~10 bar



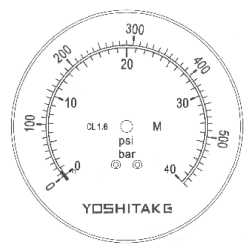
Pressure range
0~16 bar



Pressure range
0~25 bar



Pressure range
0~40 bar



*This diagram shows the scale image and detail may differ from the actual products.