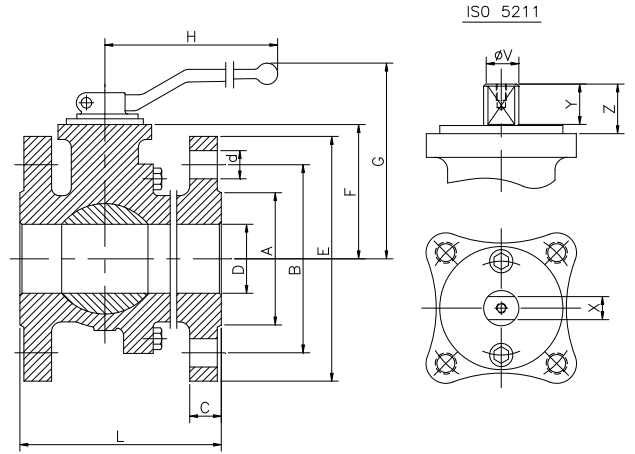
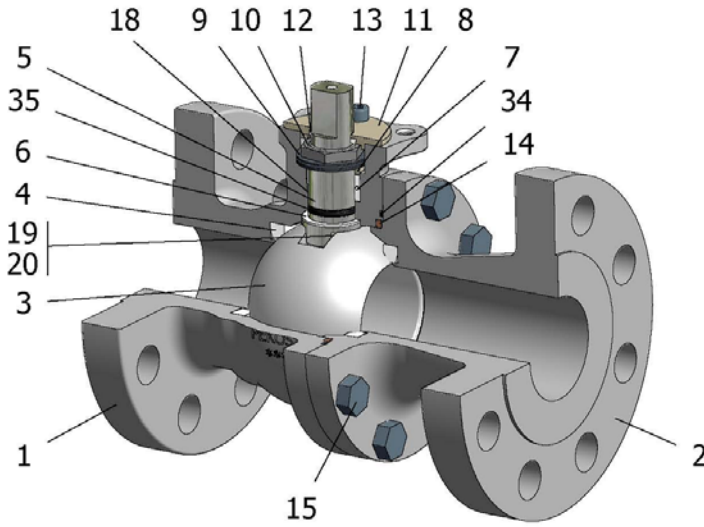




FIG. 34 SGSGV CL300 1/2"-4"



Position	Description	Material
01	Body 1	C.S. A216 WCC
02	Body 2	C.S. A216 WCC
03	Ball	S.S. A351 CF8M
04	Seat	PTFE+CG
05	Stem	S.S. AISI 316
06	Stem seal	PTFE+CG
07	Stem packing 1	Graphite
08	Gland packing	S.S. AISI 316
09	Spring washer	S.S. AISI 301
10	Stem nut	S.S. AISI 303
11	Cover	S.S. A351 CF8M
12	Cover ring	PTFE
13	Cover bolt	A4-70
14	Body seal 1	PTFE+CG
15	Body bolt	A193 B7M
16	Handle	WCB
17	Handle bolt	1.045(8.8)
18	Thrust washer	PTFE+CG
19	Spring	S.S. AISI 316
20	Antistatic ball	S.S. AISI 316
34	Body seal 2	Graphite
35	O ring stem	Viton

General features

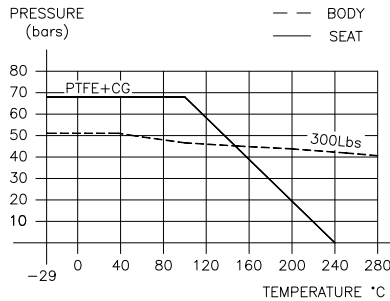
- Floating ball.
- Split body.
- Full bore.
- Soft seat.
- Bidirectional.
- TA-LUFT.
- Anti Blow out proof stem.
- Autoadjustable packing.
- Anti static device.
- Self-cavity pressure relief.

Standards

- Top flange ISO 5211
- Flanges ANSI B16.5
- Face to face ANSI B16.10
- Testing API 598, API 6D, BS 6755-1
- Design AP 6D, B16.34
- Materials according to NACE MR0175

Official approvals

- CERTIFICATE FIRE SAFE
- TA-LUFT
- ATEX 94-9EC
- API 6D.
- PED 97/23/CE.
- SIL 3 CAPABLE



PEKOS GROUP CERTIFICATES:
ISO 9001-2008 / 97-23-CE / API-6D



DIMENSIONS & Technical information

DN	CL	D	L	E	A	B	C	F	H	G	V	X	Y	Z	n x d	ISO 5211	Torque	MAST	Weight
1/2"	300	15	140	95	35	67	14	52	185	103	12	8	13	16	4 x 16	F05	17	35,7	3.1
3/4"	300	20	152	118	43	83	16	54	185	105	12	8	13	16	4 x 19	F05	20	35,7	4.5
1"	300	25	165	124	51	89	18	60	185	111	16	10	19	22	4 x 19	F05	23	78,1	5.7
1 1/2"	300	40	190	156	73	114	21	75	300	129	20	14	22	25	4 x 22	F07	51	170,9	10.1
2"	300	50	216	165	92	127	22	84	300	138	20	14	22	25	8 x 19	F07	84	170,9	12.8
2 1/2"	300	65	241	191	104	149	26	96	300	150	20	14	22	25	8 x 22	F07	108	170,9	19.0
3"	300	80	283	210	127	168	29	114	355	187	25	19	24	27	8 x 22	F10	180	354,1	27.0
4"	300	100	305	254	157	200	32	128	355	201	25	19	24	27	8 x 22	F10	260	354,1	44.0

** Depending on service conditions. * Dimensions are in mm. * Torque & MAST are in Nm * Weight is in Kilograms
* Torque values have been measured ΔP at maximum rating at room temperature